



3-Month Study Plan for BCSE Success

Introduction

Following a rigid calendar/schedule can be challenging and hard to live up to during the busyness and changeability of school or work. In contrast, fostering a simple and flexible habit is very useful. A super-simplified approach might go something like this:

1. Commit 1.5 - 2 hours a day, 5-6 days a week.
2. Practice testing days (**Study Mode**): Give ~ 1 hour to practice testing first followed by a short break. Then spend ~1 hour looking up answers to questions you didn't know or that give you trouble.
3. Notes review days (**Top Topics**): Watch suggested videos and/or read suggested notes, making your own notes as needed.
4. Click here to see [Zuku's Recommended Reading](#) - the references we use most.
5. Correctly complete 80% of the practice tests at least a month before your exam.
6. In the final quarter of your allotted study weeks, prioritize timed tests and a re-review of key notes.

MONTH 1: GET ORIENTED, BUILD MOMENTUM



DAY 1



PRACTICE TESTING

DAY 2



NOTES REVIEW

DAY 3



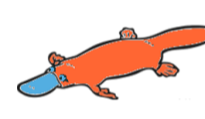
PRACTICE TESTING

DAY 4



NOTES REVIEW

DAY 5



MIX IT UP

DAY 6



TEST DAY

DAY 7



REVIEW AND RECOVER

WEEK 1



STUDY MODE

60 Q:
10 PHARM
10 TOX
10 ANAT
10 CLIN PATH
10 PHYSIO
10 MED

TOP TOPICS

2 STUDY
STRATEGY:
PARTS 1 AND 3

TOP TOPICS

2 SMALL ANIMAL
(SA) NURSING
2 BOVINE
NURSING

STUDY MODE

80 Q:
15 PHARM
15 TOX
15 ANAT
15 CLIN PATH
10 PHYSIO
10 MED

TOP TOPICS

2 SA NURSING
2 EQUINE
(EQ) NURSING

STUDY MODE

40 Q:
25 PHARM
15 TOX
TIMED TEST
50 Q

TOP TOPICS

2 SA NURSING
2 SMALL
RUMINANT
(SM RUM)
NURSING
TIMED TEST
100 Q

MY MISSED
QUESTIONS

TOP TOPICS
RE-REVIEW

WEEK 2



STUDY MODE

80 Q: PHYSIO

TOP TOPICS

3 PHYSIO
1 SA NURSING

STUDY MODE

80 Q: PHYSIO

TOP TOPICS

2 PHYSIO
2 BOVINE (BOV)
NURSING

STUDY MODE

50 Q:
25 PHARM
15 ANESTHESIA
10 MED
TIMED TEST
50 Q

TOP TOPICS

3 PHYSIO
1 EQ NURSING
TIMED TEST
100 Q

MY MISSED
QUESTIONS

TOP TOPICS
RE-REVIEW

WEEK 3



STUDY MODE

80 Q:
CLIN PATH

TOP TOPICS

2 CLIN PATH
2 SA NURSING

STUDY MODE

80 Q:
CLIN PATH

TOP TOPICS

2 CLIN PATH
2 EQ NURSING

STUDY MODE

50 Q:
25 PHARM
25 CLIN PATH
TIMED TEST
50 Q

TOP TOPICS

2 CLIN PATH
2 SM RUM
NURSING
TIMED TEST
100 Q

MY MISSED
QUESTIONS

TOP TOPICS
RE-REVIEW

WEEK 4



STUDY MODE

80 Q: PHYSIO

TOP TOPICS

2 PHYSIO
2 SA NURSING

STUDY MODE

80 Q: PHYSIO

TOP TOPICS

2 PHYSIO
2 BOV NURSING

STUDY MODE

50 Q:
20 PHYSIO
30 CLIN PATH
TIMED TEST
50 Q

TOP TOPICS

2 PHYSIO
2 EQ NURSING
TIMED TEST
100 Q

MY MISSED
QUESTIONS

TOP TOPICS
RE-REVIEW

MONTH 2: SOLID PROGRESS



DAY 1



PRACTICE TESTING

DAY 2



TOP TOPICS

DAY 3



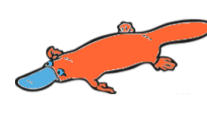
PRACTICE TESTING

DAY 4



TOP TOPICS

DAY 5



MIX IT UP

DAY 6



TEST DAY

DAY 7



REVIEW AND RECOVER

WEEK 5



STUDY MODE

90 Q:
CLIN PATH

TOP TOPICS

2 CLIN PATH
2 SA NURSING

STUDY MODE

90 Q:
CLIN PATH

TOP TOPICS

2 CLIN PATH
2 SM RUM
NURSING

STUDY MODE

50 Q:
20 CLIN PATH
30 ANESTHESIA
TIMED TEST
40 Q

TOP TOPICS

1 SM RUM
NURSING
1 EQ NURSING
2 TICK-BORNE
DZ
TIMED TEST
100 Q

MY MISSED
QUESTIONS

TOP TOPICS
RE-REVIEW

WEEK 6



STUDY MODE

90 Q: MED

TOP TOPICS

4 CANINE TOP DZ

STUDY MODE

90 Q: MED

TOP TOPICS

3 SA CARDIO
1 CANINE
SHELTER DZ

STUDY MODE

50 Q:
25 MED
25 SURGERY
TIMED TEST
40 Q

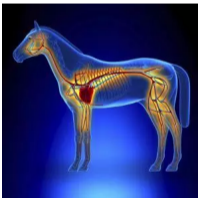
TOP TOPICS

2 CANINE NEURO
1 CANINE ENDO
1 CANINE
GENETIC
TIMED TEST
100 Q

MY MISSED
QUESTIONS

TOP TOPICS
RE-REVIEW

WEEK 7



STUDY MODE

90 Q:
65 ANAT
25 PREV MED

TOP TOPICS

4 FELINE TOP DZ

STUDY MODE

90 Q:
65 ANAT
25 PREV MED

TOP TOPICS

2 FELINE NEURO
1 FELINE
SHELTER
1 FELINE
GENETIC

STUDY MODE

50 Q:
25 MED
15 ANAT
10 PREV MED
TIMED TEST
40 Q

TOP TOPICS

2 CRANIAL
NERVES
2 REPORTABLES
TIMED TEST
100 Q

MY MISSED
QUESTIONS

TOP TOPICS
RE-REVIEW

WEEK 8



STUDY MODE

90 Q: MED

TOP TOPICS

4 EQ TOP DZ

STUDY MODE

90 Q: MED

TOP TOPICS

3 EQ NEURO
1 EQ COLIC

STUDY MODE

50 Q:
30 ANAT
20 ANESTHESIA
TIMED TEST
80 Q

TOP TOPICS

2 EQ LAMENESS
1 FOAL
DIARRHEA
1 CERVID TOP DZ
TIMED TEST
100 Q

MY MISSED
QUESTIONS

TOP TOPICS
RE-REVIEW

MONTH 3: THE HOME STRETCH



DAY 1



PRACTICE TESTING

DAY 2



TOP TOPICS

DAY 3



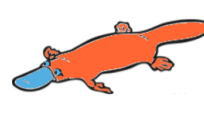
PRACTICE TESTING

DAY 4



TOP TOPICS

DAY 5



MIX IT UP

DAY 6



TEST DAY

DAY 7



RE-REVIEW

WEEK 9



STUDY MODE

90 Q:
65 ANAT
25 PREV MED

TOP TOPICS

4 BOV TOP DZ

STUDY MODE

90 Q:
65 ANAT
25 PREV MED

TOP TOPICS

2 BOV
ABORTION
2 GUINEA PIG

STUDY MODE

50 Q:
25 PREV MED
25 SURGERY
TIMED TEST
110 Q

TOP TOPICS

2 BOV REPRO
1 BOV GENETICS
1 BOV MASTITIS
TIMED TEST
110 Q

TOP TOPICS

RE-REVIEW
TIMED TEST
100 Q

WEEK 10



STUDY MODE

90 Q:
45 ANESTHESIA
45 SURGERY

TOP TOPICS

3 SM RUM TOP
DZ
1 ZOONOSES

STUDY MODE

90 Q:
45 ANESTHESIA
45 SURGERY

TOP TOPICS

3 ECG
1 ZOONOSES

STUDY MODE

75 Q:
25 PREV MED
25 ANESTHESIA
25 SURGERY
TIMED TEST
110 Q

TOP TOPICS

2 ZOONOSES
2 AQUATICS
TIMED TEST
100 Q

TOP TOPICS

RE-REVIEW
TIMED TEST
110 Q

WEEK 11



STUDY MODE

90 Q:
60 DX IMAGING
30 DENTISTRY

TOP TOPICS

2 AQUATICS
2 ZOONOSES

STUDY MODE

90 Q:
60 DX IMAGING
30 DENTISTRY

TOP TOPICS

1 ZOONOSES
1 PORCINE
2 POULTRY

STUDY MODE

50 Q:
40 DX IMAGING
10 DENTISTRY
TIMED TEST
110 Q

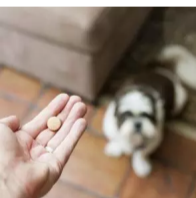
TOP TOPICS

2 CAMELIDS
2 PORCINE
TIMED TEST
140 Q

TOP TOPICS

RE-REVIEW
TIMED TEST
140 Q

WEEK 12



STUDY MODE

90 Q:
45 PHARM
45 TOX

TOP TOPICS

1 PORCINE
3 TOXICOSES

STUDY MODE

90 Q:
45 PHARM
45 TOX

TOP TOPICS

1 PORCINE
1 TOXICOSES
2 REPTILES

STUDY MODE

50 Q:
15 DX IMAGING
35 CATCH UP
TIMED TEST
110 Q

TOP TOPICS

CATCH UP
TIMED TEST
140 Q

TOP TOPICS

RE-REVIEW
TIMED TEST
140 Q

